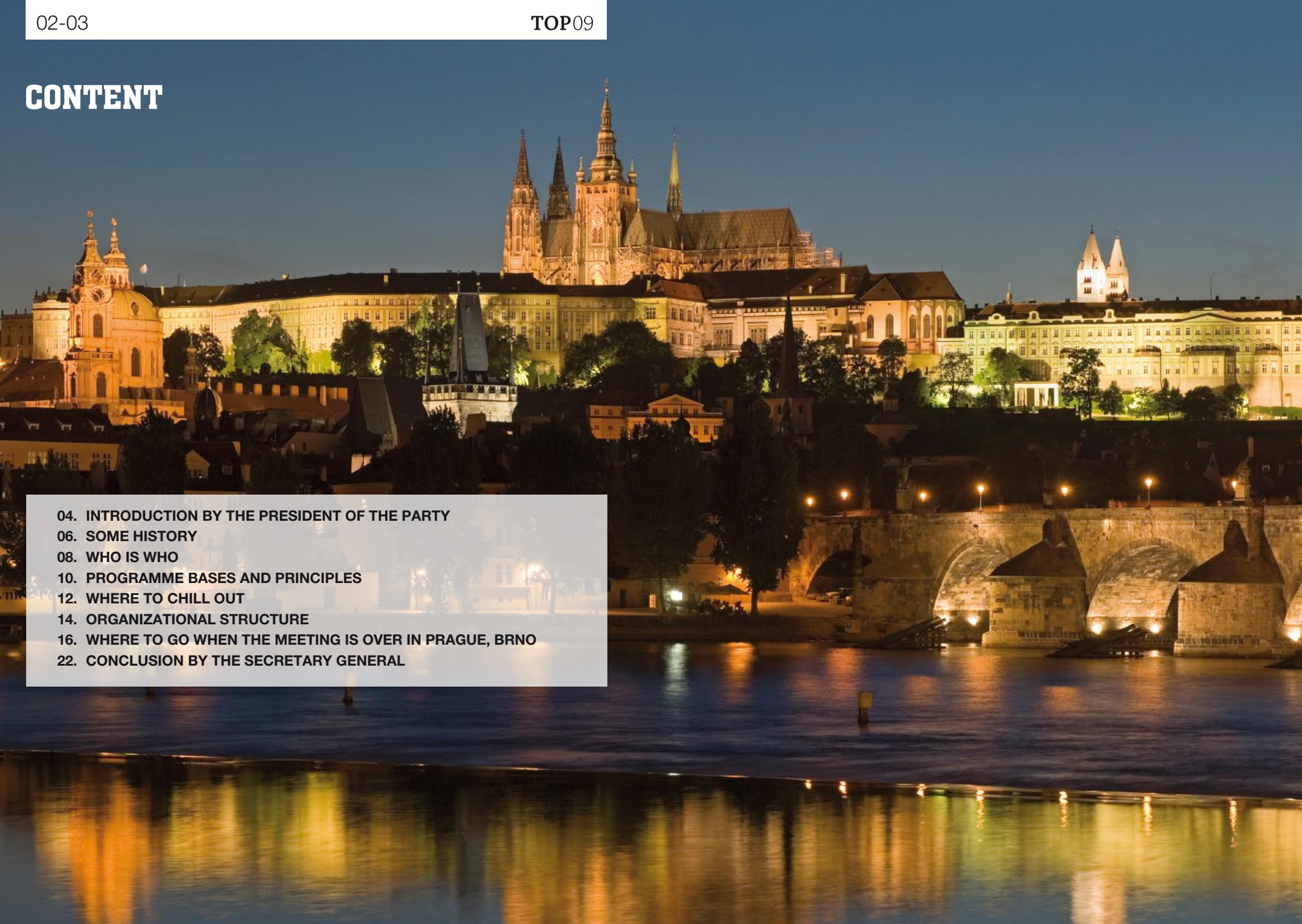


More than you think

# WHO WHERE HOW WHY

# CONTENT

- 
- A nighttime photograph of Prague, Czech Republic. The Prague Castle complex is illuminated, featuring the prominent spires of St. Vitus Cathedral. Below the castle, the Charles Bridge with its arches spans the Vltava River. The city lights and bridge structures are reflected in the calm water of the river.
- 04. INTRODUCTION BY THE PRESIDENT OF THE PARTY
  - 06. SOME HISTORY
  - 08. WHO IS WHO
  - 10. PROGRAMME BASES AND PRINCIPLES
  - 12. WHERE TO CHILL OUT
  - 14. ORGANIZATIONAL STRUCTURE
  - 16. WHERE TO GO WHEN THE MEETING IS OVER IN PRAGUE, BRNO
  - 22. CONCLUSION BY THE SECRETARY GENERAL



## INTRODUCTION BY THE PRESIDENT OF THE PARTY

**Ladies and gentlemen, dear guests,**

It is my great pleasure to welcome you to the Czech Republic. Please let me give you a brief outline of one of the political parties that serve here, TOP 09.

Although TOP09 is a relatively young party, it has established itself quickly and very well on the political scene of the Czech Republic over the past two years. We are one of the three political parties that form the present government coalition with five ministers and the third strongest party in the Chamber of Deputies. Many of our members also hold various other local and countrywide political offices.

TOP 09 is a conservative party based on the ideals of Judeo-Christian European tradition and fiscal responsibility. The ideals themselves are contained in the name of our party – tradition, responsibility, prosperity - and together represent our main political objectives which are to maintain and deepen the rule of law and democracy, to pursue responsible policies with sound public finances and to build a stable economy based on free market and non-discrimination.

We also feel our great responsibility toward our future generations. We are aware that the public opinion about politicians in the Czech Republic is very unfavorable and feel responsible for improving the reputation of our work.

TOP 09 is inclined towards European cooperation and has, since February 2011, been a member of the European People's Party. One of our goals is to make the Czech Republic a respected member of the European Union and to influence the public in the Czech Republic to view the European and Euro-Atlantic structures as a part of our culture and lives.

I hope that you will enjoy your stay in the Czech Republic, a country of many beauties.

**Karel Schwarzenberg**

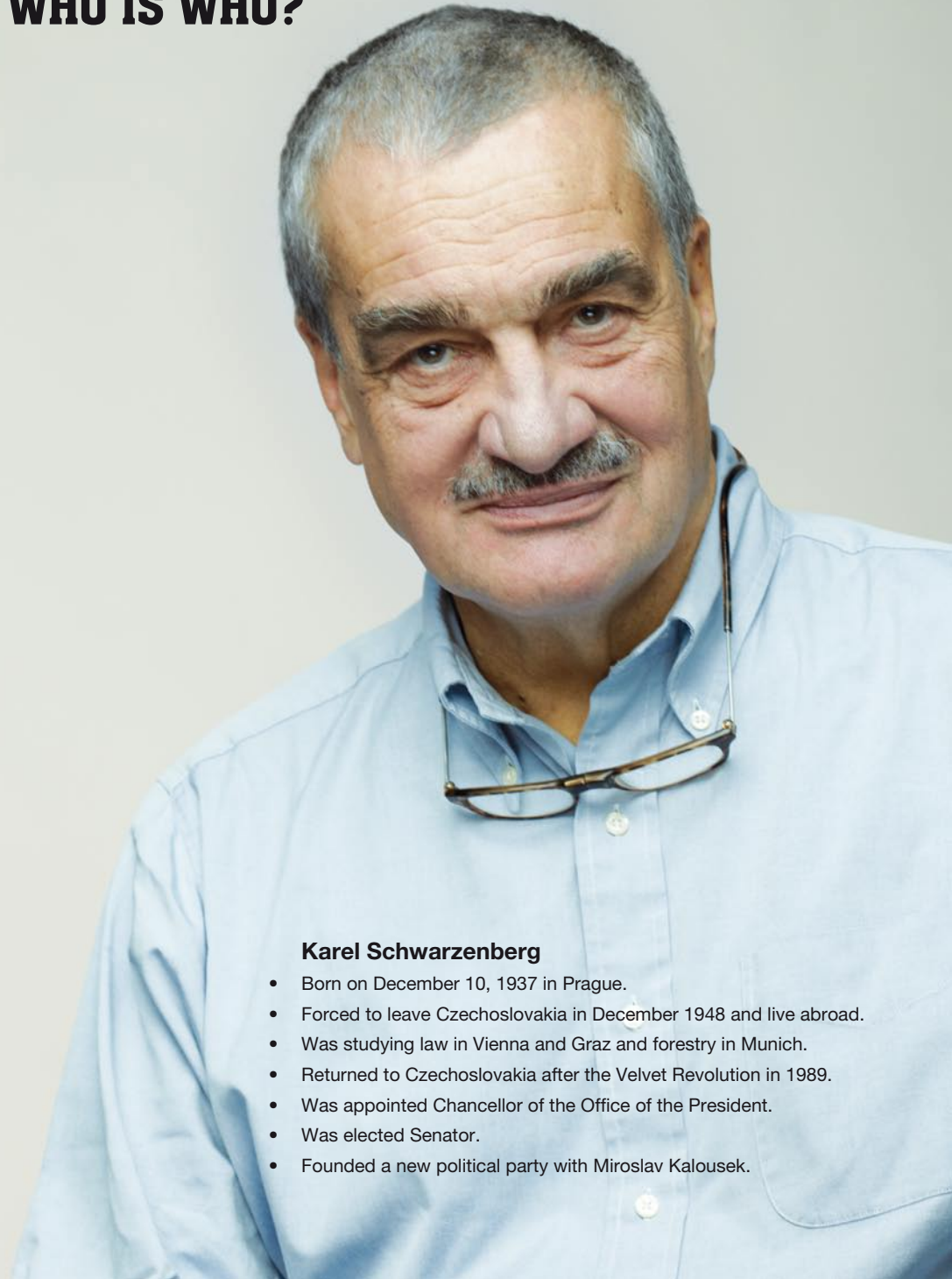


# SOME HISTORY

- On June 11, 2009 Karel Schwarzenberg and Miroslav Kalousek are founding a new conservative party called TOP 09.
- It is based on a platform of conservatism and fiscal responsibility with a strong emphasis on European Judeo-Christian tradition.
- On June 26, 2009 the party is registered and approved by Ministry of Interior.
- On July 9, 2009 Karel Schwarzenberg as the President of the Preparation Committee and Petr Gazdik, the President of the Movement of Mayors and Independents, sign Agreement on strategic alliance with the Movement of Mayors and Independents. It means that both organizations will have common election campaign, common candidate lists with personalities from regions.
- On July 22, 2009 TOP 09 is establishing a new fraction in the Czech Senate "TOP 09 and Mayors". Members are former independent senators from the Senate fraction „Open Democracy“, Soňa Paukrtová is elected President of the fraction.
- On July 23, 2009 a program of the public health reform is presented. Rudolf Zajac, a former Slovak health minister, is the main advisor of the party in this field.
- On August 27, 2009 a program of the financial reform is presented by Miroslav Kalousek.
- On September 2009 the Constitutional Court cancelled the premature election (originally expected in October 2009). New term of the election is June 2010.
- On November 28 – 29, 2009 the National Assembly of the party takes place. Executive Committee, Party Presidency, Conciliation Committee and Nationwide Audit Commission are elected.
- The parliamentary election takes place on June 26 – 27, 2010.
- TOP 09 is becoming the third biggest party in the Chamber of Deputies.
- In February 2011 TOP 09 entered the European People's Party.



## WHO IS WHO?



### **Karel Schwarzenberg**

- Born on December 10, 1937 in Prague.
- Forced to leave Czechoslovakia in December 1948 and live abroad.
- Was studying law in Vienna and Graz and forestry in Munich.
- Returned to Czechoslovakia after the Velvet Revolution in 1989.
- Was appointed Chancellor of the Office of the President.
- Was elected Senator.
- Founded a new political party with Miroslav Kalousek.



### **Miroslav Kalousek**

- Born on December 17, 1960 in Tábor.
- Studied at the Institute of Chemical Technology in Prague.
- Was elected to the Czech Parliament Chamber of Deputies as a member of KDU-ČSL. After his re-election in 2002, he became the chairman of the Committee on Budget in the Chamber of Deputies.
- Served as the Minister of Finance from January 2007 to May 2009.
- Founded a new political party with Karel Schwarzenberg.

# PROGRAMME BASES AND PRINCIPLES

## TRADITION

1. We are a conservative party, rooted in the Judeo-Christian European cultural heritage. We care about moral values which come from its spiritual legacy and traditions.
2. We are a democratic party based on the idea of freedom and humanism which have even survived totalitarian era.
3. We want to maintain and cultivate Czech culture in all fields for future generations, knowing that the capability to be open to new ideas will bring back to life the cultural heritage and our culture will be lead to a higher level.

## RESPONSIBILITY

1. We don't want to be popular at all costs, and especially not for unrealistic election promises. We are prepared to speak openly about problems and to suggest solutions. Inadequate promises can cause serious problems in future and finally, they are the source of citizens' dissatisfaction with politicians.
2. Our main task is to keep stability of the public budgets which deal with the aging population. People live longer today and with the growing standard of living, requirements for the pension and health systems are growing, too. If the high - quality health system is accessible to everyone and the human life is lived in a dignified way until the last days, both systems have to be reformed and they have to get rid of all dogmatic prejudices. We say frankly that it is not possible to do it without increased participation of all people. The sooner it will be done, the larger the space for social response of the adopted acquisitions is.
3. We feel our responsibility and we realize that our lives are limited by time, and we do not want to be scorned by future generations. That is why we are obliged:
  - a/ not to increase the public debts and not to burden the future of our children with unbearable interests resulting from these debts
  - b/ to follow the principles of the sustainable development, take care of the environment and to be active in avoiding dangerous climate changes, to emphasize energy savings in all fields of human activities, to increase the amount of energy from renewable sources
4. We bear our part of responsibility for liberty and safety of all people in the world. We understand the NATO treaty not only as our obligation towards our allies, but also as the part of our own safety.

## PROSPERITY

1. The only tool leading to wealth and prosperity is free market regulated by clear and transparent rules, which are supervised by effectively working institutions. The more liberal market we have, the stricter rules we must implement on it.
2. Profit must not take precedence over justice and morality. Respecting justice and ethics must be a basic requirement for making profit.
3. We make an effort for social cohesion through both intergenerational solidarity and solidarity for weak, ill and handicapped people. But the social system cannot serve as an alternative for employment and thus demotivate all the society. We refuse all forms of discrimination.
4. The basic condition for dignified life in a prosperous society is safety, international stability and peace. We are convinced that strong and unified position of the European union is also in the interest of the Czech citizens. That is why we support operations and agreements which lead to this position.
5. Relationship within NATO has the same importance for us and is a crucial condition for the security of Europe and all the world.
6. Prosperity and competitiveness is impossible without high level of science, research and education. The investment into them has to be the first social and budget priority. Personal and non-discriminational motivation of students will help to improve the high school education level. Together with this system, a grant system for all kinds of study expenses has to be introduced. This combination will ensure that no talent will be lost because of social reasons.
7. We fight against corruption rigorously. We defend interests of taxpayers against organized groups with specific interests (known as lobby). Acting of these groups delimits the equal opportunities and increases costs of national budgets. Their activity has to be limited by strict rules comparable with the situation in other developed countries.
8. Individuals who work hard, who have higher education or are getting new experience, cannot be punished by taxes and payments. We will simplify the tax system, we will create one collection point and one control institution.
9. The administrative costs have to be reduced. Operations of the civil service have to be simplified and speeded up.
10. There is not enough smile ever. Not to smile at somebody all day long is a crime.



# WHERE TO CHILL OUT?

## Where to go to drink a glass (two, three) of beer?

Are you in Prague (Brno, Ostrava, Pilsen) for a business trip and do you want to try a good pub with good Czech beer? Our historically first regional chairmen of the party would like to give you an advice on where to go.



Pivovarská restaurace Brno



### Jan Vitula

**Pivovarská restaurace Brno**  
Beerhouse and restaurant  
in the style of the 1930's.

**Where/** Mendlovo náměstí 20  
603 00 Brno  
[www.pivovarskabrno.cz](http://www.pivovarskabrno.cz)

### František Laudát

**Plzeňský restaurant Anděl**

**Where/** Nádražní 114  
150 00 Praha 5

[www.restauraceandel.cz](http://www.restauraceandel.cz)

### Pavol Lukša

**Moravská chalupa**

Typical Moravian and Czech  
cuisine, Moravian wine.

**Where/** Musorgského 9  
702 00 Ostrava  
[www.moravskachalupa.cz](http://www.moravskachalupa.cz)

### Marek Ženíšek

**Restaurace U Mansfelda**

Delicious home made Czech cuisine  
and Pilsner Urquell beer.

**Where/** Dřevěná 9  
301 00 Plzeň  
[www.umansfelda.cz](http://www.umansfelda.cz)

# ORGANIZATIONAL STRUCTURE OF TOP 09

## THE ORGANIZATION OF TOP 09 IS FOUR-TIERED

1. The nationwide organization encompasses all regional chapters.
2. Regional organization acts within the boundaries of the region and consists of all local and county organizations of the Party in the territory of the respective region.
3. County organization acts usually within the county boundaries. In regions with lower number of members, one county organization may act on behalf of several neighbouring counties. The county organization consists of all local organizations and party members in the given territory.
4. Local organization is the basic organizational unit of the Party. It may be founded in communities with at least 5 party members. A local chapter may act in the territory of more communities provided the requirements of the minimum number of 5 party members and their belonging to the same county chapter are satisfied. County organizations also fulfil the tasks of local organizations in communities where no local organization is active.

## NATIONAL ASSEMBLY

is the highest TOP 09 authority. Its participants are members of the Executive Committee and delegates selected at Regional Conferences. National Assembly takes place every two years and it mainly elects President of TOP 09, Vice-Presidents, members of Presidency and members of the Executive Committee.

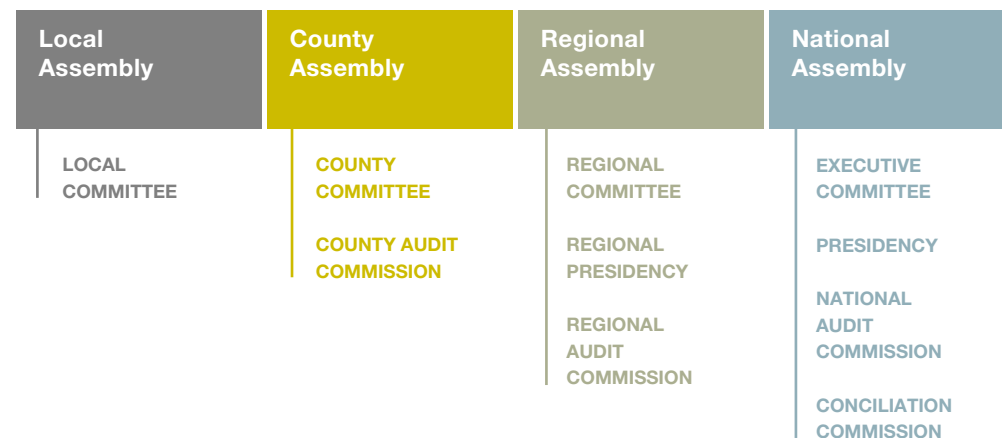
## THE EXECUTIVE COMMITTEE

is the Party executive body. It convenes as needed, at least once in every two months and its voting members are members of the Party Presidency, fourteen members elected at the National Assembly, and then Government members, Deputies and Senators of the Czech Houses of Parliament, Members of the European Parliament and Regional Governors who are Party members.

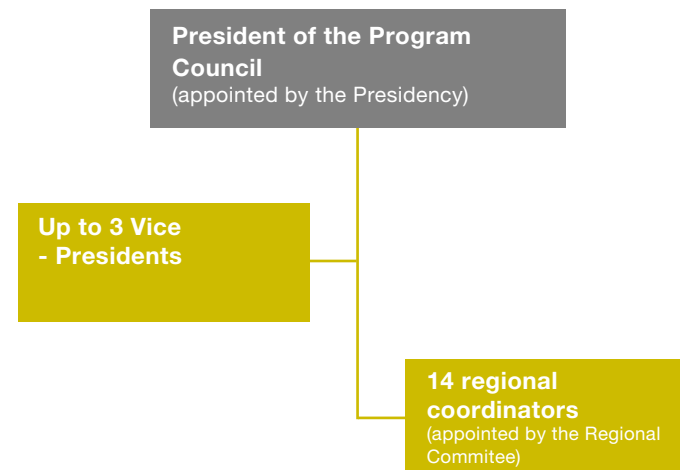
The Executive Committee approves the annual budget draft and the annual financial reports, discusses crucial political issues, submits, on behalf of the Party, proposals for appointments at the national level, decides on the final ranking of candidates on the Party list for elections in the Chamber of Deputies, decides on the nomination of candidates for individual election districts for the Senate elections, forges election and post-election coalitions etc.

## THE PARTY PRESIDENCY

is an operative executive body. It consists of the President, the First Vice-President, up to four Vice-Presidents, President of the Fraction in Chamber of Deputies and in Senate and Fraction of Members of the European Parliament and up to five members of the Party Presidency.



TOP 09 also establishes **EXPERT COMMITTEES** for budget, international policy and defence, regional and municipal policies, for agriculture and countryside, environment, security, justice and fight against corruption, for education, science, research and culture, industry and transport, ICT, churches and civic society.





# WHERE TO GO WHEN THE MEETING IS OVER? PRAGUE

## HISTORICAL SIGHTSEEING



### Strahov Monastery

Baroque monastery with a beautiful library. The monastery has its own functional micro brewery.

**Where/** Strahovské nádvoří 132/1, 118 00 Praha 1, Hradčany



### Josefov and the Jewish town with the Old Jewish cemetery

**Where/** U starého hřbitova 243/3a,  
110 00 Praha 1, Josefov



### Břevnov Monastery

The oldest male monastery in Bohemia, founded in 993. The present baroque buildings built in early 18th century by Christopher Dientzenhofer stand atop Romanesque foundations and crypt. The monastery is a fine example of baroque architecture and art in the Czech Republic.

**Where/** Markétská 1/28, 169 00  
Praha 6, Břevnov

### Vyšehrad

A medieval site located on a rock over the river Vltava. Vyšehrad is described in the old Czech legends as the seat of the first Bohemian princes. Today, Vyšehrad is a popular site for walks, picnics and weddings. There is also a national cemetery – Slavín – a place where many important figures of the Czech cultural and political life are buried.

**Where/** Národní kulturní památka Vyšehrad,  
V Pevnosti 159/5b, 128 00 Praha 2





## ARTS

**DOX**

Centre for Contemporary Art

**Where/** Poupětova 1, 170 00 Praha 7**Meet Factory**

International Centre of Contemporary Art

**Where/** Ke Sklárně 3213/15, 150 00 Praha 5

## PUBS AND RESTAURANTS

**Terasa U Zlaté studně**

Restaurant is located on the fourth floor of the U Zlaté studně Hotel, with the view that will convince you that Prague is really the city of one hundred spires.

**Where/** U Zlaté studně 166/4, 118 00 Praha 1, Malá Strana**U Sedmi Švábů**

A medieval restaurant with the Middle Ages furnishings – wooden tables and benches, crockery, respectful service in historical costumes, meals and drinks prepared on the basis of traditional historical recipes.

**Where/** Jánský vršek 241/14, 118 00 Praha 1, Malá Strana**Malostranská beseda**

Malostranská beseda is a beautiful and complex cultural centre for locals and tourists alike. You can find there an attractive Café, a Pilsner Urquell Restaurant and a beer hall where you can taste traditional Czech cuisine and a famous Czech beer. On the first floor you will find the Musical and Theatre Club. On the third floor you can find the Video Café Trick Bar, a cinema and a bar, there are also premises for organizing exhibitions.

**Where/** Malostranské náměstí 21, 110 00 Praha 1, Malá Strana



**Ambiente restaurants**

A chain of high quality restaurants and cafés.

[www.ambi.cz](http://www.ambi.cz)

**Kolkovna restaurants**

A chain of restaurants with traditional Czech cuisine and Pilsner beer.

[www.kolkovna.cz](http://www.kolkovna.cz)

**Cukrkavalimonada**

[www.cukrkavalimonada.com](http://www.cukrkavalimonada.com)

**Where/** Lázeňská 7, 118 00 Praha 1

**Café Lounge**

[www.cafe-lounge.cz](http://www.cafe-lounge.cz)

**Where/** Plaská 615/8, 150 00 Praha 5, Malá Strana

**Café Imperial**

[www.cafeimperial.cz](http://www.cafeimperial.cz)

**Where/** Na Poříčí 15, 110 00 Praha 1

**CLUBS****Blue Light bar**

[www.bluelightbar.cz](http://www.bluelightbar.cz)

**Where/** Josefská 42/1, 118 00 Praha 1  
Malá Strana

**La Casa Argentina**

[www.lacasaargentina.cz](http://www.lacasaargentina.cz)

**Where/** Dlouhá 730, 110 00 Praha 1

**Roxy**

[www.roxy.cz](http://www.roxy.cz)

**Where/** Dlouhá 33, 110 00 Praha 1

**Radost FX**

[www.radostfx.cz](http://www.radostfx.cz)

**Where/** Bělehradská 120, 120 00 Praha 2,  
Vinohrady

**Techtle Mechtle**

[www.techtle-mechtle.cz](http://www.techtle-mechtle.cz)

**Where/** Vinohradská 1128/47, 120 00  
Praha 2, Vinohrady

**Mecca**

[www.mecca.cz](http://www.mecca.cz)





## CONCLUSION BY THE SECRETARY GENERAL

The Czech Republic is not only beautiful Prague. My native town is Litomyšl and I am sure that you will enjoy your stay there if you decide to visit it.

### FAMOUS OPERA FESTIVAL IN PICTURESQUE HISTORICAL EAST BOHEMIAN TOWN OF LITOMYŠL

After the Prague Spring, Smetana's Litomyšl International Opera Festival is the oldest music festival and the largest open-air classical music festival in the Czech Republic. Since 1949, this music festival has been organized almost each year between the end of June and the beginning of July in Litomyšl, an old East-Bohemian town where Bedřich Smetana - the founder of Czech national music - was born. The festival's main center is located on the premises of the magnificent Litomyšl State Castle, inscribed on the UNESCO World Heritage list in 1999. Main events usually take place in the Second Courtyard, with excellent acoustics and unique retractable roofing. The East Bohemian town of Litomyšl was founded in the 13th century. The dominant feature of Litomyšl is the monumental and architectonically exceptional Renaissance castle dating from the years 1568 – 1581. Litomyšl has one of the largest squares in the Czech Republic with many historical buildings. The cultural traditions of the town go much beyond regional and national frontiers. The exquisite interiors of the castle, especially the baroque castle theatre, the amphitheatre in the castle park and Smetana's house, all offer varied programmes of concerts and theatrical performances and thus enrich the life of the town throughout the year. Litomyšl came to public notice in a political context as well: in 1994 the meeting of the seven Central European presidents took place at the castle, and in 1995 the Spanish royal couple visited the town.

Pavel Severa / Secretary General of TOP 09

[www.litomysl.cz](http://www.litomysl.cz)

[www.smetanovalitomysl.cz](http://www.smetanovalitomysl.cz)





*S podporou Starostů*

### **Contact**

The TOP 09 Party Headquarters

Michnův palác

450/40 Újezd

118 00 Praha 1, Malá Strana

Czech Republic

**[www.top09.cz](http://www.top09.cz)**

e-mail: [international@top09.cz](mailto:international@top09.cz)

Editor-in-chief: Lenka Koudelková